

## Quick start guide

This section describes how to start immediately with MonitorMagic. It will take you only 15 minutes to setup a MonitorMagic service and configure some monitors, rules and alarm actions.

### Prerequisites

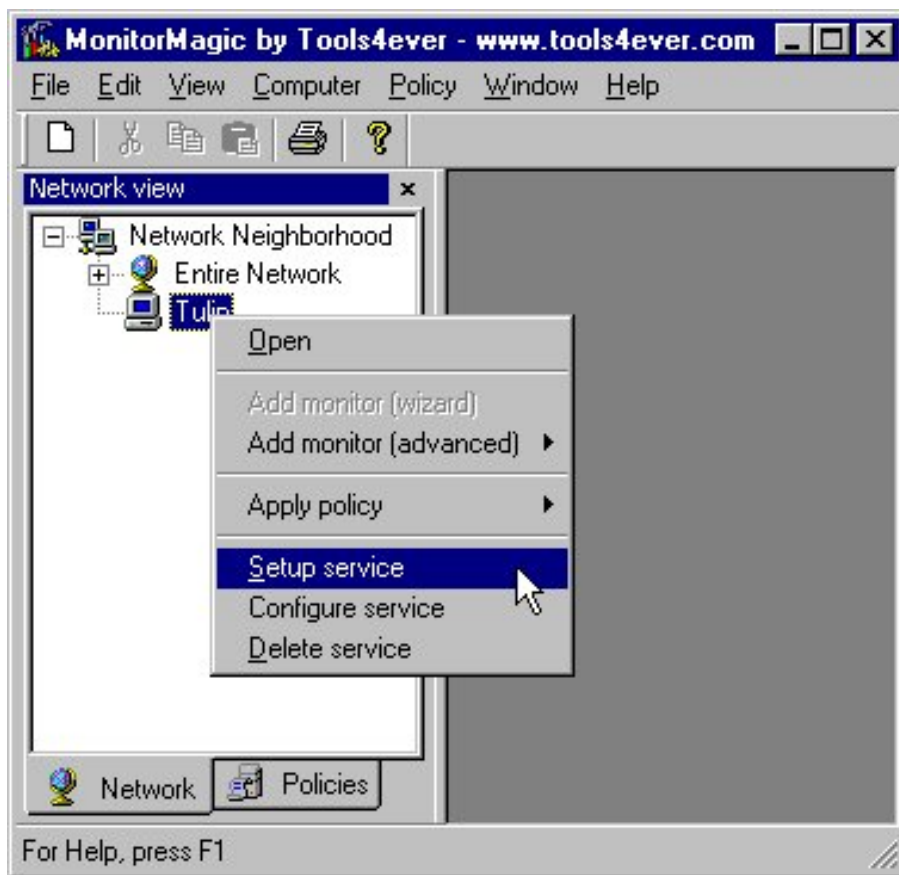
1. Make sure you have the latest version of MonitorMagic installed. The software is available from [www.tools4ever.com](http://www.tools4ever.com).
2. Log on as an administrator to a computer of one of the following types: Windows NT 4 workstation or server, any Windows 2000 version including Windows 2000 Professional, Windows 2000 Server, Windows 2000 Advanced server.

### MonitorMagic client Installation

3. Install the MonitorMagic software on the computer. The MonitorMagic software is contained in the software package **SetupMonitorMagic.exe**. This package contains **all** software components of MonitorMagic.

### MonitorMagic service installation

4. Start the MonitorMagic client. When you start the MonitorMagic client for the first time, it will notice that you never started MonitorMagic before. In that case, the MonitorMagic client will startup a wizard to introduce the package. To continue, you can either run this wizard or continue with the procedure described in this section. To continue with this procedure, stop the wizard by answering no to the first question.
5. The MonitorMagic client shows up with a mostly empty screen and a network browse window on the left side. To run MonitorMagic you need to have at least one MonitorMagic service installed. To start installing the MonitorMagic service, browse to the machine you are working on, right click the machine name and select menu option *Setup service*.

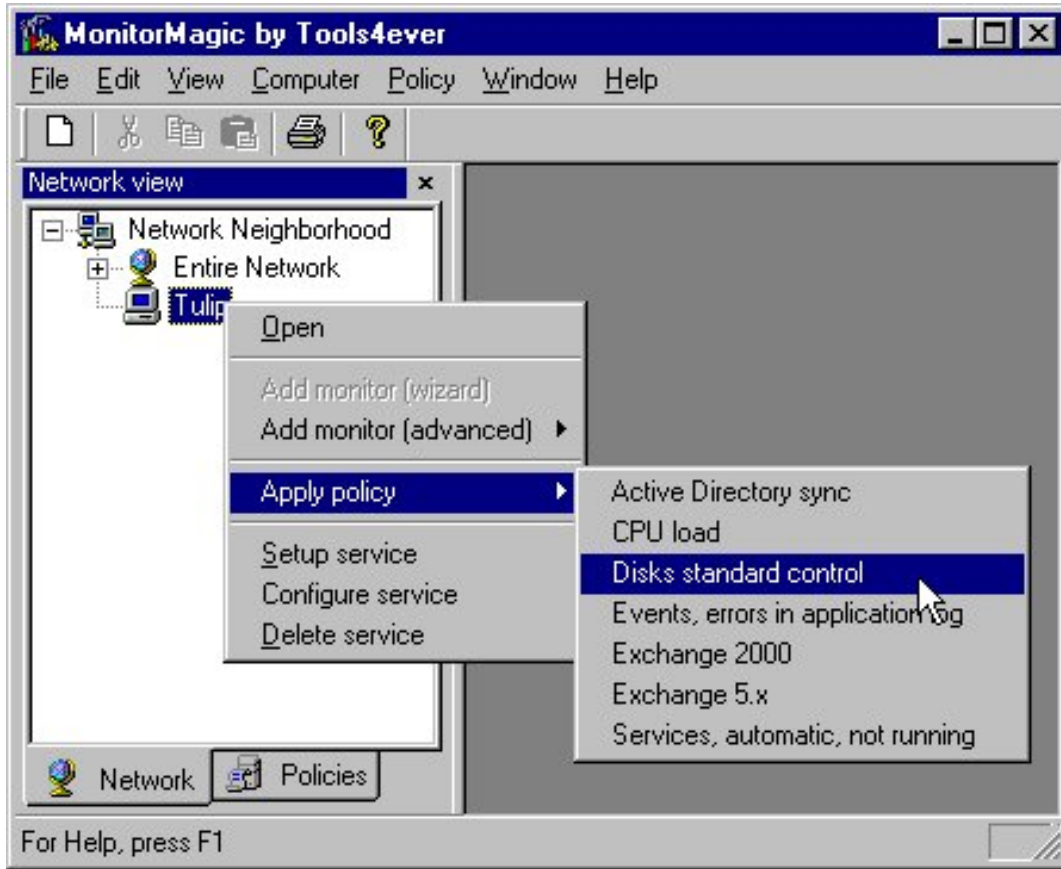


6. The MonitorMagic Service Setup dialog shows up. The dialog is used to specify all parameters needed to install the MonitorMagic service. By default, MonitorMagic fills in the **Server name(s)** section. If you are a member of the *Domain Admins* group of the domain you are logged on to, you don't need to change any further section. Leave the **Serial** number blank and press the button **Install/Upgrade**.

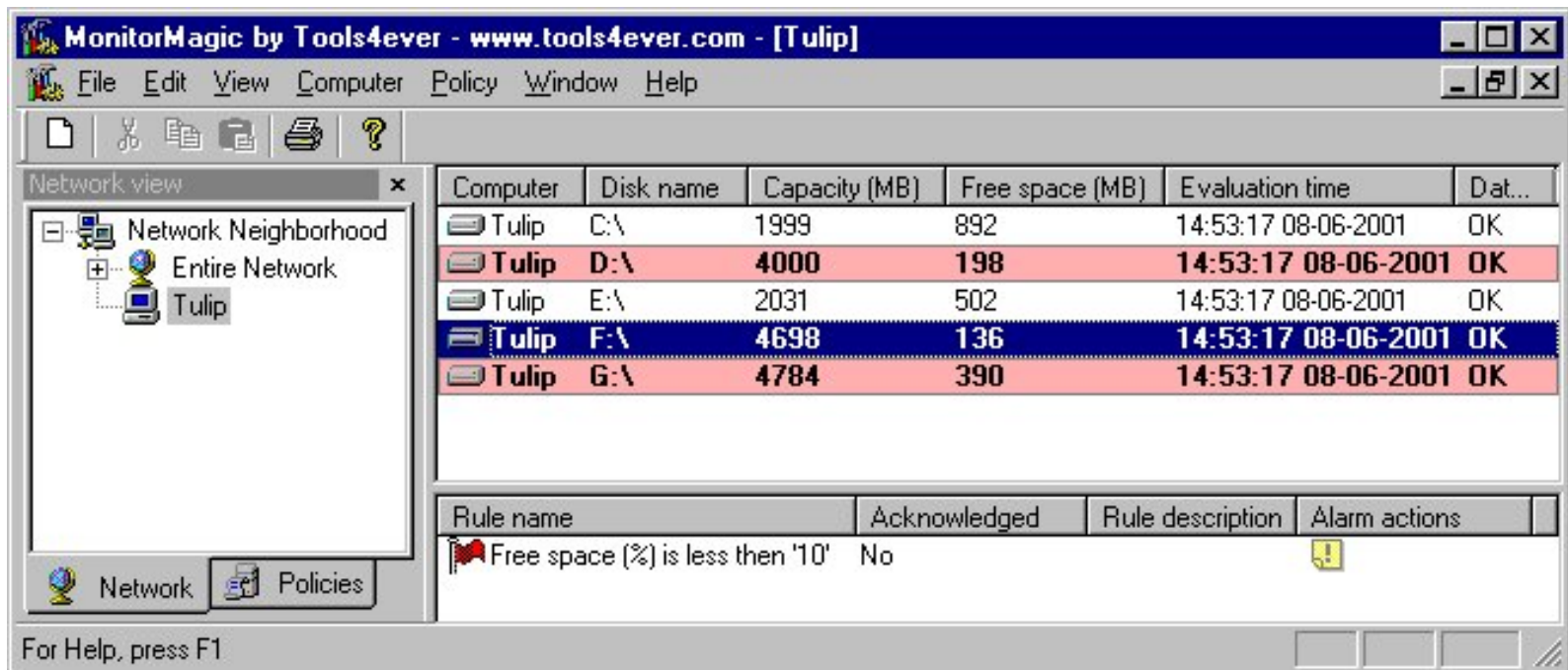


7. When successfully installed, MonitorMagic will open a monitor window that connects to the MonitorMagic service just installed. The new monitor window will show a single line of text, informing that there is nothing to show ("*Connection established with computer xxx. No monitors configured, nothing to show here ...*").
8. To start monitoring we will apply a monitor policy to the computer. Select the name of the local computer in the network browse window, right click the mouse and select menu option *Apply policy, Disks standard control*. MonitorMagic will find and start monitoring the disks in the computer. According to the applied policy *Disks standard control*, some rules and alarm actions will be created and executed. The rules of the monitors will check if the available disk

space is not less than 10%. When this occurs, a popup message is sent to the current machine.



- The results are shown in the new monitor window. If a rule is violated and triggered, the color of the monitored object has been changed. In the top part of the monitor window you can see the monitored objects (*monitors*). When a *monitor* is selected, you can see the associated rules in the bottom part of the monitor window.



10. Summarizing the previous steps: The MonitorMagic is now installed on the local computer. From the MonitorMagic client, a policy is applied. The policy contains disk monitors. Each disk monitor, has a rule checking for available disk space. If the rule is violated, a popup message is sent to the local machine. You can now continue applying other policies to the same machine, or applying this policy to other machines. Next, you can configure your own policies and apply them to various systems.